

## KINGS LODGE, SW19 8PL – Superior Student House Share

**Location:** Kings Lodge is in the middle of Wimbledon, just a few minutes away from all facilities. The school is only 10 minutes away on foot.

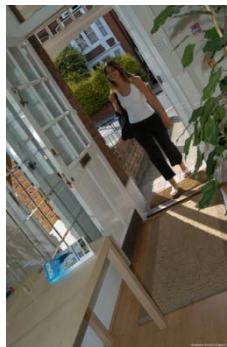
### Bedrooms

The bedrooms are bright and well decorated:

- 9 en-suite bedrooms
- Twin, Single and Double rooms available
- Each room includes a bed, secure safety deposit box, chair, desk, wardrobe and TV.

### Communal Facilities

- A large, well equipped kitchen/dining/sitting area with all facilities including cooker, microwave, dishwasher, fridge/freezer, TV with cable connection & DVD player.
- Laundry room with iron, washing machine & clothes dryer
- Sunny outside garden
- WiFi throughout the building.

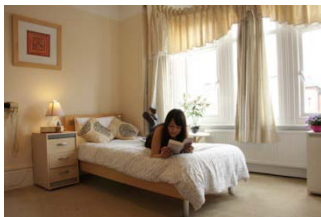


### What's included?

- Kitchen equipment (cutlery, plates, saucepans, etc)
- Bed Linen
- Towels are NOT included
- WiFi
- Laundry Facilities (Washing Machine and Tumble Dryer, Iron)
- Hairdryer
- TV and DVD player
- Communal areas are cleaned daily, study-bedroom and bath/shower rooms are cleaned weekly.

### Please Note:

- **No smoking is allowed anywhere in the house or garden**
- There is a maximum of 11 students at any time in Kings Lodge.
- Minimum age: **18**.
- Check-in Saturday only 13.00 to 17.00 and check-out Saturday only 10.00 to 12.00.
- **Late or Sunday check-in £50.00**
- **No check-in after 8.00pm.**



## QUEENS LODGE, SW20 8QE – Superior Student House Share

**Location:** Queens Lodge is located between Wimbledon Centre and Raynes Park, approximately 10 minutes walk to each. The house is about a 7 minute walk to Wimbledon School of English.

### Bedrooms

The bedrooms are bright and well decorated:

- 5 en-suite bedrooms
- 1 bedroom with private shower-room
- Each room includes a bed, secure safe, chair, desk, TV, and storage cupboard.

### Communal Facilities

- A large, well equipped kitchen/dining/sitting area with all facilities including cooker, microwave, dishwasher, fridge/freezer, TV with cable connection & DVD player.
- Laundry room with iron, washing machine & clothes dryer
- Sunny outside garden
- WiFi throughout the building.

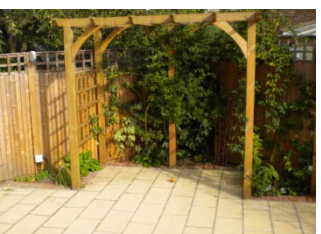


### What's included?

- Kitchen equipment (cutlery, plates, saucepans, etc)
- Bed Linen
- WiFi
- Laundry Facilities (Washing machine and tumble dryer, iron)
- TV and DVD player
- Communal areas are cleaned daily, study-bedroom and bath/shower rooms are cleaned weekly
- Towels are **NOT** included.

### Please Note:

- **No smoking is allowed anywhere in the house or garden.**
- There is a maximum of 6 students allowed at any one time in Queen's Lodge so bedrooms cannot be shared.
- **Minimum age: 25**
- Check-in Saturday only 13.00 to 17.00 and check-out Saturday only 10.00 to 12.00.
- **Late or Sunday check-in £50.00**
- **No check-in after 8.00pm.**



## HAYNT WALK 1, SW20 9NY – Standard Student House Share

**Location:** Haynt Walk 1 is located at Wimbledon Chase, approximately 25 minutes walk from Wimbledon School of English, or a 5 minute train journey/10 minute bus journey from Wimbledon Town Centre and the school.

### Bedrooms

The bedrooms are bright and well decorated:

- 2 en-suite bedrooms. Plus 1 large bedroom and 2 standard bedrooms with shared shower-room & facilities.
- Each room includes a bed, secure safe, chair, desk, TV, and storage cupboard.



### What's included?

- Kitchen equipment (cutlery, plates, saucepans, etc)
- Bed linen
- WiFi
- Laundry Facilities (washing machine and iron)
- TV in each room
- Communal areas are cleaned weekly, study-bedroom and bath/shower rooms are cleaned weekly
- Towels are **NOT** included

### Communal Facilities

- A large, well equipped kitchen/dining/sitting area with all facilities including cooker, microwave, dishwasher, fridge/freezer.
- Laundry room with iron, washing machine.
- Sunny outside garden
- WiFi throughout the building

### Please Note:

- No smoking is allowed anywhere in the house. Students may smoke in the garden.
- There is a maximum of 5 students allowed at any one time in Haynt Walk so bedrooms cannot be shared.
- Minimum age: **18**
- Check-in Saturday only 13.00 to 17.00 and check-out Saturday only 10.00 to 12.00
- **Late or Sunday check-in £50.00. No check-in after 8.00pm.**



## HAYNT WALK 2, SW20 9NX – Standard Student House Share

**Location:** Haynt Walk 2 is located at Wimbledon Chase, approximately 25 minutes walk from Wimbledon School of English, or a 5 minute train journey/10 minute bus journey from Wimbledon Town Centre and the school.

### Bedrooms

The bedrooms are bright and well decorated:

- 4 en-suite bedrooms and 2 standard bedrooms with shared shower-room & facilities.
- Each room includes a bed, secure safe, chair, desk, TV, and storage cupboard.



### What's included?

- Kitchen equipment (cutlery, plates, saucepans, etc)
- Bed linen
- WiFi
- Laundry facilities (washing machine and iron)
- TV in each room
- Communal areas are cleaned weekly, study-bedrooms and bath/shower rooms are cleaned weekly
- Towels are **NOT** included

### Communal Facilities

- A large, well equipped kitchen/dining/sitting area with all facilities including cooker, microwave, dishwasher, fridge/freezer.
- Laundry room with iron & washing machine
- Sunny outside garden
- WiFi throughout the building.

### Please Note:

- No smoking is allowed anywhere in the house. Students may smoke in the garden.
- There is a maximum of 6 students allowed at any one time in Haynt Walk 2 so bedrooms cannot be shared.
- Minimum age: **18**
- Check-in Saturday only 13.00 to 17.00 and check-out Saturday only 10.00 to 12.00.
- **Late or Sunday check-in £50.00.**
- **No check-in after 8.00pm.**



## CHERRYWOOD LANE, SM4 4HS – Standard Student House Share

**Location:** Cherrywood Lane is located in between Wimbledon and Morden, approximately 40 minutes walk to Wimbledon School of English or a 15 minute bus ride from Wimbledon Centre and the school.

### Communal Facilities

- A large, well equipped kitchen/dining/sitting area with all facilities including cooker, microwave, fridge/freezer.
- Washing machine, ironing board and iron provided
- Sunny outside garden
- Secure WiFi throughout the building.



### What's included?

- Kitchen equipment (cutlery, plates, saucepans, etc)
- Bed Linen
- WiFi
- Laundry facilities (washing machine and iron)
- TV in the lounge
- Communal areas are cleaned weekly, study-bedroom and bath/shower rooms are cleaned weekly
- Towels are **NOT** included.

### Bedrooms

The bedrooms are bright and well decorated:

- 5 large double bedrooms and 1 standard double bedroom, shared shower-room & separate shared bathroom.
- Each room includes a bed, chair, desk, wardrobe, chest of drawers and mirror.



### Please Note:

- No smoking is allowed anywhere in the house. Students may smoke in the garden.
- There is a maximum of 6 students allowed at any one time in Cherrywood Lane so bedrooms cannot be shared.
- Minimum age: **18**
- Check-in Saturday only 13.00 to 17.00 and check-out Saturday only 10.00 to 12.00. **Late or Sunday check-in £50.00. No check-in after 8.00pm.**

## MALCOLM ROAD, SW19 4AS – Standard Plus Student House Share

**Location:** Malcolm Road is a quiet cul-de-sac situated next to WSE, so the house is only 2 minutes walk from school and is in the centre of Wimbledon, near the shops, station and facilities.

### Bedrooms

- Six bedrooms with shared bathroom, separate shower-rooms & facilities.
- One bedroom with en-suite shower-room.
- Each bedroom has a bed, chair, desk, TV, wardrobe, chest of drawers and mirror
- All bedrooms are for single occupancy only.



### What's included?

- Kitchen equipment (cutlery, plates, saucepans, etc)
- Dishwasher
- Laundry facilities (washing machine and iron)
- Bed linen
- WiFi
- Communal areas, study-bedrooms and bath/shower rooms are cleaned weekly
- Towels are **NOT** included

### Communal Facilities

- A large, well equipped kitchen/dining/sitting area with all facilities including cooker, microwave, fridge/freezer, TV
- Washing machine, ironing board and iron provided
- Very large garden.



### Please Note:

- No smoking is allowed anywhere in the house or garden.
- Minimum age: **18**
- Check-in Saturday only 13.00 to 17.00 and check-out Saturday only 10.00 to 12.00. **Late or Sunday check-in £50.00.**
- **No check-in after 8.00pm.**



RESIDENCES MAP

